



THE SEED

A Newsletter From Your...

DENVER APPLE PI
Macintosh User Group

September 2015

<http://www.denverapplepi.com>

Vol. 36, No. 9

Denver Apple Pi
Mac SIG & Help SIG Meetings
are held at
12930 W 32ND AVENUE GOLDEN
CO 80401 7 TO 9 PM

SEE WEBSITE FOR MAP

| 2015 | | |
|----------|--------|-----------------------|
| Mac SIG | Sep 15 | 3 rd Tues |
| Help SIG | Sep 24 | 4 th Thurs |
| Mac SIG | Oct 20 | 3 rd Tues |
| Help SIG | Oct 22 | 4 th Thurs |
| Mac SIG | Nov 17 | 3 rd Tues |
| Help SIG | Nov 19 | 3 rd Thurs |
| Party | Dec 15 | 3 rd Tues |
| Help SIG | Dec 17 | 3 rd Thurs |

Mac SIG Meeting

September 15, 2015

7 to 9 pm

Presenter: Larry fagan

Getting the most out of your Address Book

Address Book - A System-wide Application
Set Up: email, phone numbers, groups,
address labels

Table of Contents

Cheryl Smith,
Membership Chairman 2

Make Text Bigger
on iPhone..... 2

Rise and Fall of
Mac User Groups 3

iPhone Signal Strength
in Numbers Not Dots..... 3

Extract Data from
Time Machine..... 4

Steve Jobs Narrates Fly-
Over of Vast New Campus.... 4

Guidelines for Using
Photos in OS X..... 4

Keyboard Mimics Mouse 5

DAPI MEMBERSHIP

September 2015 membership fees are due for the following:

Katherine Cusack
Annette Rau
Carmen Rodriguez
Marie Zimmerman

Membership dues for DAPI are \$15 per year and you will receive the monthly newsletter, The Seed, via email in PDF format. If you prefer, you can pay \$20 and receive a snail mail copy of the newsletter. You can bring your payment to the monthly meetings or you can send your remittance to the club mailing address: Denver Apple Pi, 6501 Welch Court, Arvada, CO 80004.

UPCOMING EVENTS:

Mac SIG Nov 17, 2015
Jeff Gamet, New OS—
El Capitan

REMINDERS:

- Call Elissa to get your name/problem on the Help SIG list so our Help geniuses will be prepared. You need to bring your computer, your own power cord, mouse, and keyboard. Elissa will keep a sign-up list for those asking for help at the Help SIG meetings so members can be helped in a prioritized way. Drop-ins are welcome. Elissa at elissamc@comcast.net or at 303.421.8714
- Tom King says if you have questions about Excel for Mac, the spreadsheet software program, bring your questions to the Help SIG. Please call Elissa in advance.
- Need help with iPad, iPhone? If you would like assistance with navigating and synchronizing your iPad, iPhone, bring them to the Help SIG

meeting. Notify Elissa what you need help with and we will try to get the problems resolved.

- Jim Awalt has CDs of old time radio programs for the club members to use/download. awaltjw@yahoo.com.
- Jim Awalt has a list of DVDs showing previous DAPi programs. If you wish to obtain a copy (\$1 each), email Jim with DAPi in subject line and indicate which program you would like to purchase. awaltjw@yahoo.com.

FYI: Help SIG = Help Special Interest Group
Mac SIG = Macintosh Special Interest Group

CHERYL SMITH, MEMBERSHIP CHAIRMAN

Cheryl is our new DAPi Membership Chairman, and she encourages members to bring ideas to her for future meeting subjects or whatever input you care to make. She will also happily collect your membership dues, so look for her at our meetings. We look forward to having Cheryl as a DAPi Board member. She has always been a willing volunteer, particularly for helping with filming and editing of videos of our monthly meetings.

**MAKE TEXT BIGGER ON iPhone**

Go to: Settings
 Select: General
 Select: Accessibility
 Select: Larger Text

Drag Slider to desired size – Note: Apps that support Dynamic Type will adjust to your preferred reading size (as selected in the slider you dragged).



THE RISE AND FALL OF MAC USER GROUPS

Beginning in the late 1970s, Mac user groups were the backbone of Apple's faithful to troubleshoot and discuss Apple products. These user groups are now mostly sidelined to church basements and libraries. The clubs still provide tech support and classes to people who don't want to trawl the Internet for information or visit Genius Bars. Members do house calls for septuagenarian customers, and they repair systems that younger people have possibly never seen. The clubs were "the Genius Bars of their time."

The continued existence of Mac user groups is an anachronism in a world where Apple customers today can almost instantaneously get tech support online and at [Apple Stores](#). Only a few hundred user groups remain, down from several thousand at their peak in the early to mid-1990s. But they continue as a testament to loyalty and fellowship, qualities that seem quaint in a fast-moving world that sometimes favors online

interaction over face-to-face encounters. DAPi continues to have loyal members as well as new members joining regularly. Our club provides assistance in keeping our computers functioning as well as learning about the latest and greatest in our world of Apple.

Overheard at an Apple Store:

"I've owned a Mac longer than many people at the Genius Bar have been alive."



iPHONE SIGNAL STRENGTH IN NUMBERS, NOT DOTS (BARS)



Watch this [short video](#) produced by Matthew Stuart of TechInsider to see how strong your signal strength is in numbers. The bars on your iPhone actually represent a signal range, not an exact signal. Here's how to change it to the exact signal you're receiving at the moment. Watch

the short video (1:40) to see how easy it is to enter the secret number. After you enter the number, complete the easy-to-follow steps to find your signal strength. Signal strengths vary within buildings, from the roof to the elevator to the basement. Now you can determine the best location by watching the numbers. And, you can actually toggle between numbers and bars. To get rid of the numbers option altogether, you re-enter the secret number and you're back to dots (or bars) only.

The higher the number, the stronger the signal. Since the *numbers are negative*, a range between -40 and -77 is a good five-bar (dot) signal. A one bar signal would be about -102 to -120

<http://www.techinsider.io/iphone-signal-reception-carriers-strong-field-test-2015-8#ixzz3IG1Uy8bK>



EXTRACT DIRECTLY FROM TIME MACHINE

<http://tidbits.com/tipbits/175>

Submitted by
Eolake Stobblehouse

Normally you use Time Machine to restore lost data in a file like this: within the Time Machine interface, you go back to the time the file was not yet messed up, and you restore it to replace the file you have now.

You can also elect to keep both, but the restored file takes the name and place of the current one. So, if you have made changes since the backup took place that you would like to keep, they are lost, or you have to mess around a bit to merge changes, rename files, and trash the unwanted one.

As an alternative, you can browse the Time Machine backup volume directly in the Finder like any normal disk, navigate through the chronological backup hierarchy, and find the file which contains the lost content.

Once you've found it, you can open it and the current version of the file side-by-side, and copy information

from Time Machine's version of the file into the current one, without losing any content you put in it since the backup was made.



STEVE JOBS NARRATES DRONE FLY-OVER OF VAST NEW APPLE CAMPUS (USING RECORDED COMMENTS FROM 2011)

The world's most valuable company is slowly landing its new "spaceship" headquarters in Cupertino, California. This new drone video shows just how big the project is including a "full-blown on-site cement plant." Apple's Campus 2 is expected to be complete sometime in 2016. The Steve Jobs' narration is copied from his 2011 presentation to the city council on the proposed development of the spaceship campus.

<http://www.cnet.com/news/steve-jobs-narrates-drone-fly-over-of-vast-new-apple-campus/>



GUIDELINES FOR USING PHOTO IN OS X

Steve Sande, OWC Blog Site

<http://blog.macsales.com/32277-friday-five-mac-os-x-photos>

As author Steve Sande says in this timely article, the Photos app is here to stay in OS X as the replacement for iPhoto. He presents five useful things about Photos for the Mac that you may not have known before. Along with photo illustrations, he describes what you can do to work with this new application for the Mac that works hand-in-hand with its iOS counterpart to help users organize, edit and share digital photos.

- Edit photos
- Get detailed information about any photo
- Create books, cards, slideshows or order prints
- Share photos
- Create album

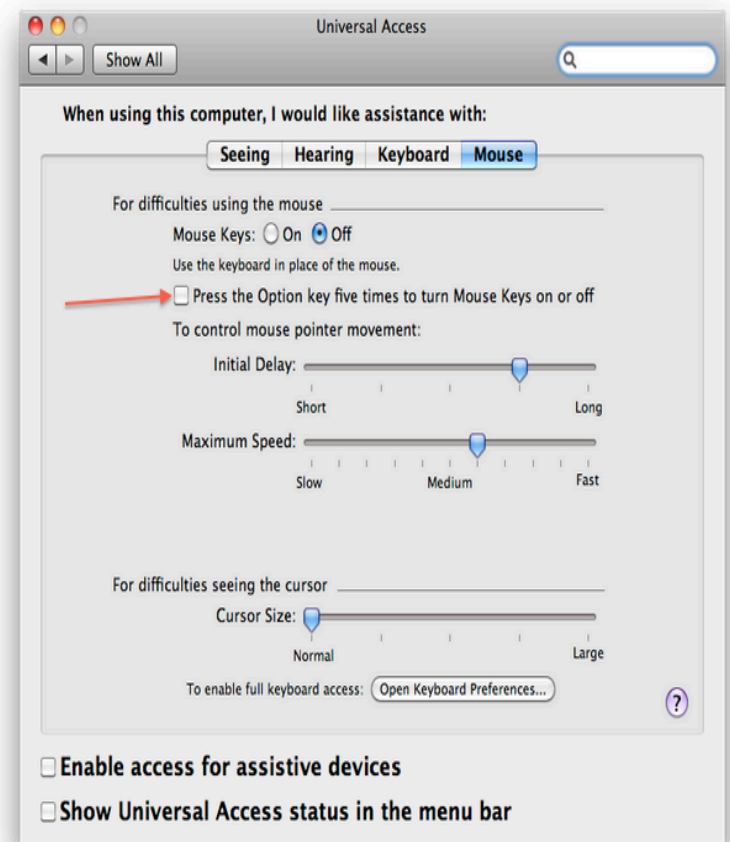


KEYBOARD MIMICS MOUSE

You may never need to use this, but you can use your keyboard to mimic mouse movements. Go to Preferences >

Accessibility > Mouse & Trackpad. There you will find instructions on how to make your keyboard become Mouse Keys.

When Mouse Keys are on, you can move the mouse pointer using the keyboard or numeric keypad. Note in the illustration below that you check the box, and then you will be able to press the Option Key 5 times to turn the Mouse Keys on or off. Remind me some day to tell the long and exciting story about how I learned about this option. This Mouse Key option is available on earlier operating systems, not just Yosemite.



For better or worse, constant change is implicit in the tech world, and opting out of upgrades makes it hard to benefit from the life-changing bits.

Denver Apple Pi Membership Information

Denver Apple Pi (DAPi) is an Apple Computer Users Group, not affiliated with Apple Inc. *The Seed* is an independent publication not affiliated or otherwise associated with or sponsored or sanctioned by Apple Inc. The opinions, statements, positions and views stated herein are those of the author(s) or publisher and are not intended to be the opinions, statements, positions or views of Apple Inc. Articles, stories, and other items in *The Seed* may be copied or used by other clubs or groups as long as credit is given to Denver Apple Pi and the author of the article. On reprints, please also include the date or volume number from *The Seed*.

MEMBERSHIP DUES are \$20.00 per year for a monthly hard copy of *The Seed* and \$15.00 per year for a monthly PDF copy. Fill in the form below or ask for an application to send with your check to the Club mailing address: DENVER APPLE Pi, 6501 Welch Ct, Arvada CO 80004.

For information, call Elissa McAlear at 303.421.8714 about Apple II, GS and Mac. Email elissamc@comcast.net. Our website is: www.denverapplepi.com

Mac SIG meets the THIRD Tuesday of the month, 7:00 to 9:00 p.m.

Troubleshooter Group Help SIG meets the FOURTH Thursday of each month unless otherwise stated, 7:00 to 9:00 p.m.

Seed articles should be mailed to jjetherton@comcast.net, subject: "*Seed* Article"

Membership Form: Date _____
 Renewal _____ New _____ Change _____
 Name _____
 Address _____
 City _____
 Phone _____
 Email _____
 Kind of Computer: Apple II _ GS _ Mac _ OS _____

Denver Apple Pi Officers, May 2015-2016

| | |
|--|----------------|
| President | Larry Fagan |
| Vice President (Help) | Tammy Hanson |
| Vice President (Mac) | Tom King |
| Secretary | Elissa McAlear |
| Treasurer | Larry Knowles |
| Membership Chair | Cheryl Smith |
| Appointees: Joyce Etherton (Seed Editor), Darlene Boord (Webmaster) | |

Denver Apple Pi
 6501 Welch Court
 Arvada, CO 80004-2223

FIRST CLASS MAIL – Dated Material

Return Service Requested

