



THE SEED

A Newsletter From Your...

DENVER APPLE PI
Macintosh User Group

June 2015

<http://www.denverapplepi.com>

Vol 36, No 6

Guest Editor: Darlene Boord

Denver Apple Pi

Mac SIG Meetings and Help SIG Meetings
are both from 7 to 9 p.m. Location:

APPLEWOOD COMMUNITY CHURCH
12930 WEST 32nd AVENUE
Golden CO 80401

MAP(S) ARE ON OUR WEB SITE.



MEETING DATES JUNE THROUGH FALL 2015

Mac SIG	June 16	3 rd Tues
Help SIG	June 25	4 th Thurs
Picnic	July 12	2nd Sunday
Help SIG	July 23	4 th Thurs
Mac SIG	Aug 18	3 rd Tues
Help SIG	Aug 27	4 th Thurs
Mac SIG	Sep 15	3 rd Tues
Help SIG	Sep 24	4 th Thurs
Mac SIG	Oct 20	3 rd Tues
Help SIG	Oct 22	4 th Thurs
Mac SIG	Nov 17	3 rd Tues

DAPI Program

June 16, 2015 — 7 to 9 p.m.

Topic:

Potpourri

Presented by

Larry Fagan

(See Page 5
for details.)



Applewood Community Church
12930 West 32nd Avenue
Golden CO 80401

Membership dues for DAPi are \$15 per year. Members receive the monthly newsletter, *The Seed*, in PDF format via e-mail. Those who prefer to do so can pay \$20 and receive a snail mail copy of the newsletter. You can bring your payment to the monthly meetings or you can send your remittance to the club mailing address: Denver Apple Pi, 6501 Welch Court, Arvada CO 80004-2223.

Members who owe dues in June are:

Daniel Dick
Bill Ferguson [paid already]
Janet Iverson [paid already]
Addis & Marilane McCarthy

Apple Statistics

Apple has 92,600 full-time employees, 12,300 more than last year.

Apple plans to open 25 new Apple Stores in 2015, mostly outside the United States. They opened 21 in 2014.

iCloud

MacLife, February 2015, has an article called *Your Complete Guide to iCloud File Syncing* (Page 25).

Here are the headers:

1. What is the Cloud?
2. iCloud Drive
3. Dropbox
4. Google Drive
5. Amazon Cloud Drive
6. SugarSync
7. Box.com
8. 8Microsoft OneDrive
9. Staying Safe in the Cloud
10. Boost Your iCloud Security Settings

iOS App Hanx Writer

This free app transforms the iPad keyboard into a typewriter, adding key clacks and carriage-return dings. This app was selected for the App Store Best of 2014. It is compatible with iPad and iPhone. Hanx Writer reflects the look, feel, and sound of old-fashioned word processing while incorporating a few modern features as well. Read all about it at hitcents.com.

MacWorld Magazine

MacWorld is now on line only. You can access the current copy as well as back copies through the Jefferson County library system. Here's how:

1. Go to jefferson.lib.co.us.
2. In the line across the top, click on Research.
3. In the column on the right, go to Research Databases > A-Z List.
4. Where the letters go across from left to right, pick Z, and it will take you to Zinio.
5. Click on Zinio.
6. Put *MacWorld* in the search box.
7. When it comes up, click on it to see all the current and past copies.
8. From there, you input your library card number to check out whatever you want.

Note: You will have access to whatever you checked out until you remove it from your library account. It doesn't disappear after a certain number of days as does an e-Book that you have borrowed from the library.

Note: All the online magazines carried by the library can be accessed through Zinio.

Handoff

This feature of Yosemite takes iCloud a step farther. When we start working on our Macs, a link is instantly made with any nearby iPhones or iPads, and transfers can be made with a tap. It's quicker than iCloud syncing.



Repair Disk Permissions

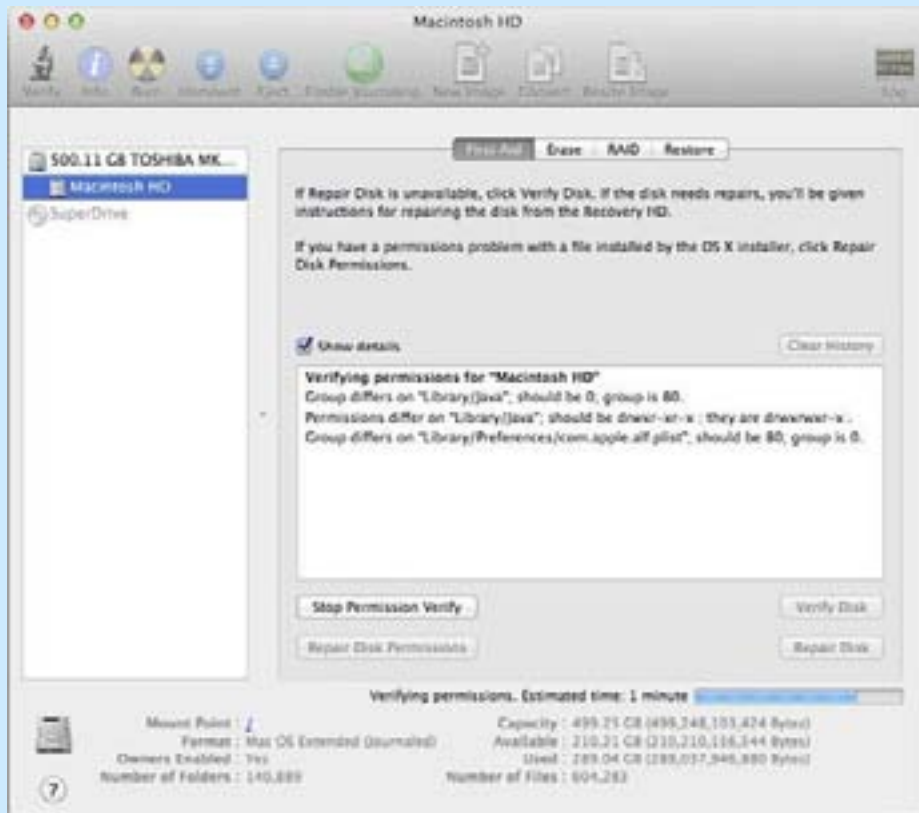
When you first start out on the Mac, you have no clue whatsoever about Repair Disk Permissions or the need to do so. As you continue on your way as a Mac user, you will come across the need to do this sooner or later.

Essentially, the files on your computer get corrupted or changed as your computer continues to work, and you have to periodically repair disk permissions in order to restore the files to their proper configuration so as to keep your computer running faster and better than it would if you did not repair disk permissions.

How often do you need to do this? Some say once a month. Some say once a week. Probably more important than exactly how often you do it is that you do it.

Go to Spotlight and type in Disk Utility. Click on that when it comes up. Then you will find yourself in Disk Utility. In the left column will be a list of all your hard drives. Click on your Macintosh HD. (See first image.) Then click on Repair Disk Permissions. If this is the first time you have done this, it will take more time than when you are doing it regularly. (See second image.) It will list all the stuff it's doing in the large horizontal white box in the middle of the screen. When it's finished, it will say Permissions repair complete. (See third image.) You may have to scroll down the box to see where it says that. It will create a vertical scroll bar only if it needs to.







Apple Pay

Apple Pay is designed to run on iOS 8.1 and iPhone 6, iPhone 6 Plus, iPad Air 2, iPad Mini 3, and the Apple Watch. Its purpose is to enable you to pay for products without even opening your wallet or using your credit card. It is supported at 220,000 locations. Banks support it. More than a million cards were activated in the first 72 hours. It seems to have been a resounding success in the U.S.

Its rival is CurrentC, supported by the Merchant Customer Exchange (MCX), which includes Wal-Mart, Best Buy, 7 Eleven, and Target. CVS and Rite Aid blocked customers from using Apple Pay, opting for the CurrentC system instead. CurrentC is not as slick as Apple Pay but it works with any smart phone with a camera. There are concerns regarding security after hackers managed to obtain the e-mail addresses of a number of CurrentC users.

They say the process of charging a purchase with Apple Pay is faster than swiping a credit card, but after all, how long does a swipe take?

DAPI Program

Larry Fagan will talk about the following topics:

- Setting up POP or IMAP accounts in Yosemite
- Updating Flash Player
- Accessing recent Web page visits
- Updating cautions

Adobe Photoshop Elements 13

- No subscription needed; buy the license.
- \$79.99 or \$119.99 with Premiere Elements.
- Good for beginners.
- Much cheaper compared with the cost of a subscription to Creative Cloud.
- Three modes: Quick, Guided, and Expert.
- Expert level when you get there offers a lot of the same functions as Photoshop.

How to Type the Command Key Symbol



1. Go to System Preferences > Language & Text.
2. Click Input Sources.
3. Check the box for Keyboard & Character Viewer and for "Show Input Menu in menu bar."
4. Click this new menu bar icon and choose Show Character Viewer.
5. In the drop-down menu under View, select Code Tables.
6. Where you see the tabs Unicode, Other Encodings, and Favorites, click the Unicode tab.
7. Scroll down to 00002300, titled Miscellaneous Technical.
8. In the grid below, you will see the command symbol in Row 2310, Column B. Click on it, and it will appear below.
9. To use it in your document, simply click where it says Insert.
10. To add it to your Favorites, click the gear button at the bottom left and then select Add to Favorites.
11. To see your favorites, click on the Favorites button in the line across the top.

Note This works in Pages and probably in Word, but it doesn't work in any of the Adobe applications I experimented with.

Note: There are lots of symbols to find in Character Viewer to make your documents more interesting.

Carpool to DAPI Meetings

If you need a ride to our DAPI meetings and would be interested in carpooling, please contact Elissa at 303-421-8714. DAPI does not publish members' names or phone numbers, so arrangements have to be made through a central source.

Denver Apple Pi Membership Information

Denver Apple Pi (DAPI) is an Apple Computer User Group. It is not affiliated with Apple, Inc. *The Seed* is an independent publication not affiliated or otherwise associated with or sponsored or sanctioned by Apple, Inc. The opinions, statements, positions, and views stated herein are those of the author(s) or publisher and are not intended to be the opinions, statements, positions, or views of Apple, Inc.

Articles, stories, and other items in *The Seed* may be copied or used by other clubs or groups as long as credit is given to Denver Apple Pi and the author of the article. On reprints, please also include the date or volume number from *The Seed*.

MEMBER BENEFITS INCLUDE monthly meetings, information, new product announcements, door prizes when available, a forum for sharing ideas with other members, and help. Copies of club presentations are available for a nominal fee on DVD. In addition, older software is available for Apple IIGS on 3.5" disk and 100MB ZIP disk and for older Macs on 3.5" HD disk, ZIP disk, and CD.

MEMBERSHIP DUES are \$20.00 per year for a monthly hard copy of *The Seed* or \$15.00 per year for a monthly PDF copy. Fill in the form below or ask for an application to send with your check to the DAPI mailing address: Denver Apple Pi, 6501 Welch Ct, Arvada CO 80004. Call Elissa McAlear at 303-421-8714 for information about Apple IIGS and Mac. Email: elissamc@comcast.net. Our Web site is: <http://www.denverapplepi.com>.

Macintosh SIG meets the THIRD TUESDAY of the month, 7:00 to 9:00 p.m. Troubleshooter Group Help SIG meets the FOURTH THURSDAY of the month, 7:00 to 9:00 p.m. Articles for *The Seed* should be e-mailed to jjetherton@comcast.net. In the subject line put *Seed Article*.

Membership Form

Date _____ Renewal New Change
Name _____
Address _____
City _____
Phone _____
E-mail _____
Kind of Computer: Apple II ___ GS ___ Mac ___ OS ___

Denver Apple Pi Officers

President Larry Fagan
Vice President (Mac) Tom King
Vice President (Help) Tammy Hanson
Secretary Elissa McAlear
Treasurer Larry Knowles
Membership Chair Sheila Warner

Appointees
Joyce Etherton (Seed Editor)
Diana Forest and Darlene Boord (Webmasters)

Denver Apple Pi
6501 Welch Court
Arvada CO 80004-2223
FIRST CLASS MAIL DATED
Return Requested

